

465-C1

Rotating Drum Bypass Humidifier



TECHNICAL SPECIFICATION



Performance:

- Save on energy costs and improve comfort.
- Increasing a home's relative humidity makes it feel more comfortable at 68°F / 20°C than it does at 73°F / 23°C at a low relative humidity level.
- Lower thermostat settings deliver substantial savings on monthly energy bills.

Features:

- Unit mounts on a right or left-hand discharge.
- Great Compatibility: Works with a heat pump or with gas/oil fired furnaces.
- Self-piercing saddle valve makes installation easy.
- Quick Access to Drum: Just remove the retaining clip for easy maintenance.
- High capacity unit can help achieve comfortable conditions in even the largest residential environment.
- Flexible humidistat controls adjust from 20% to 80% relative humidity.

How Humidifiers Work:

This rotating drum type humidifier is installed in either the supply or return ductwork. Air is drawn across the moistened evaporator pad (wetted through the home's water supply), and the water is efficiently released into the home by the furnace or air handler. The adjustable, precision-made humidistat allows the user to choose the optimum humidity level for maximum indoor comfort.

Warranty:

- 2-Year limited warranty.

TECHNICAL SPECIFICATION

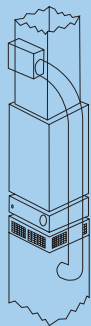
465-C1

Model	465-C1
Part No.	352440-001
Type Of Unit	Bypass Rotating Drum
Max Evaporative Capacity	22.5 Gallons Per Day – (3.5 LPH)
Volt/Hz/Motor	24 V, 60 Hz, 3 Watt Motor
Evaporator Pad	8 1/2" W x 1" D x 25" H (216 W x 25 D x 635 H mm)
Dimensions	14 3/4" W x 11" D x 11 1/2" H (375 W x 280 D x 292 H mm), NOTE: Height Including Clearance is 14 3/4" (375mm)
Packaging	14" W x 22 1/2" H x 17 1/2" L (356 W x 572 H x 444 L mm)
Duct Opening	4 5/8" x 7 5/8" (117 x 194mm)
Weight	12 lbs (5.44 kg) / Shipping – 14 lbs (6.35 kg)
Humidistat	24 V, Adjustable from 20% to 80% RH
Water Supply Connection	1/4" (6mm) Copper or Plastic, 20–120 PSI (1.4 – 8.3 Bar), Required
Water Drain Connection	1/2" (13mm)
Bypass Air Connection	7" (179mm)

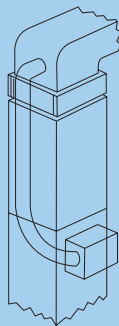
Evaporator Supply Capacity

Furnace Temperature		Supply		Return	
°F	°C	Gallons per Day	Liters per Hour	Gallons per Day	Liters per Hour
100°F	37.7°C	10.6	1.67	7.8	1.23
120°F	48.8°C	16.5	2.60	12.4	1.95
140°F	60°C	22.5	3.55	17.1	2.70

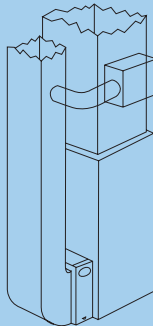
Installation Options



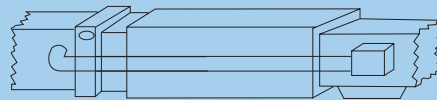
Upflow Bottom Return



Downflow Counterflow



Upflow Side Return



Horizontal



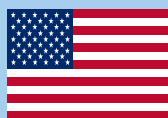
Indoor Air Quality Since 1948.

ISO 9001:2008 Certified.

Industry Memberships:



Proudly Designed, Engineered, and Manufactured in the USA.*



*Manufactured with domestic and foreign components.

To help serve you better, please contact us at:

800-884-0002 (tel)

800-458-2379 (fax)

Trion[®]

101 McNeill Road

Sanford, NC 27330

www.trioniaq.com

customerservice@trioniaq.com

Trion[®] is a registered trademark of Air System Components, Inc. All product specifications reflect available information at the printing of this brochure. Trion[®] reserves the right to revise or modify products and/or specifications without notice. ©2012 Trion[®].